



Heriot-Watt University
Learning and Teaching Symposium, 6 October 2015
Report on Enhancement Fund Project : Designing Live

Designing Live!

A SERIES OF FREE ONE-DAY DESIGN CHALLENGES FOR INTERIOR DESIGN AND TEXTILES STUDENTS CURRENTLY AT, OR CONSIDERING JOINING, HERIOT-WATT UNIVERSITY

These one-day events are an amazing chance to get some experience designing with others, develop your own discipline, and to meet people already working in the industry. They are designed to give college students a taste of what university might be like, and other students near graduation to improve their skills with industry. The events require no preparation, are free, and will look great for your CV. 2016!

Food and Refreshments, Design-Craft Materials will be provided. These being free will be just for those who have not booked and those who will be invited to the next projects at a later date.

DATES IN SPRING / SUMMER 2015:

SATURDAY 21ST FEBRUARY:	GRIFIELD CREATIVE SPACE, EDINBURGH 10AM - 5:30PM, 6-8PM DRINKS/RECEPTION THEME: "BORN"
SATURDAY 26TH MARCH:	GRIFIELD CREATIVE SPACE, EDINBURGH 10AM - 5:30PM, 6-8PM DRINKS/RECEPTION THEME: "MAKE AN ENTRANCE"
SA/SH/IN 9-10TH MAY:	CALTON / BALMORUCK, GLASGOW 10AM - 5:30PM, 6-8PM DRINKS/RECEPTION THEME: "CHILD'S PLAY"

FOR MORE INFO: SARAH MITCHELL, ALEX MACLAREN@HW.AC.UK
WWW.TWinkl.COM

HERIOT-WATT UNIVERSITY

A short series of One-Day events easing Student Transitions

- From College to University



- From University to Workplace



Designing Live!

A SERIES OF **FREE** ONE-DAY DESIGN CHALLENGES FOR INTERIOR DESIGN AND TEXTILES STUDENTS CURRENTLY AT, OR CONSIDERING JOINING, HERIOT-WATT UNIVERSITY

These one-day events are an excellent chance to get some experience designing with others, outside your own discipline, and to meet people already working in the industry. They are designed to give college students a taste of what university might be like, and allow students near graduation to improve their links with industry. The events require no preparation, are free, and will look great in your portfolio / on your CV. JOIN IN!

Food and Refreshments, Design/Craft Materials will be provided. Those taking part will be put into mixed teams and tasked with a design challenge to address over the day. At the end of the day, work will be exhibited, and Prizes will be awarded to the best project(s) at a free drinks reception.

DATES IN SPRING / SUMMER 2015:

SATURDAY 21ST FEBRUARY. GAYFIELD CREATIVE SPACE, EDINBURGH EH1
9AM-5.30PM, 6-8PM DRINKS RECEPTION
THEME: "HOME"

SATURDAY 28TH MARCH. GAYFIELD CREATIVE SPACE, EDINBURGH EH1
9AM-5.30PM, 6-8PM DRINKS RECEPTION
THEME: "MAKE AN ENTRANCE"

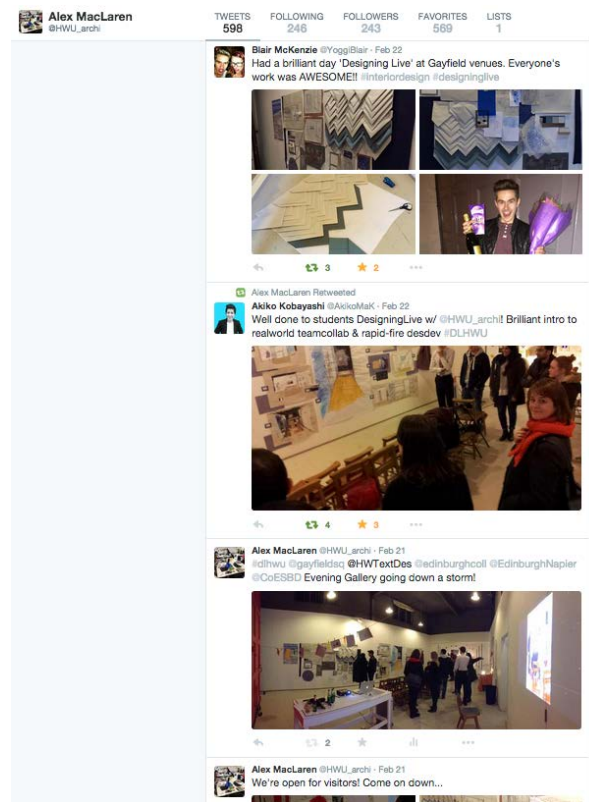
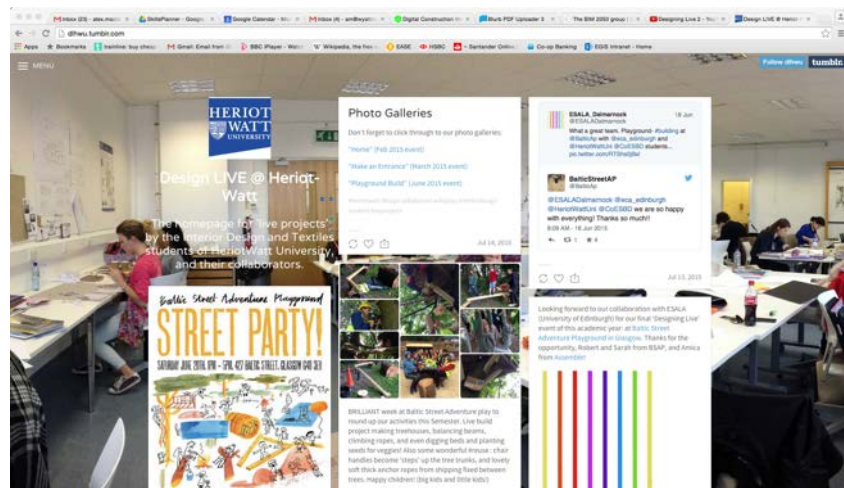
SAT/SUN 9-10TH MAY. CALTON / DALMARNOCK, GLASGOW
VENUE TBC
THEME: "CHILD'S PLAY"

TO SIGN UP, PLEASE EMAIL: ALEX.MACLAREN@HW.AC.UK.



Heriot-Watt University

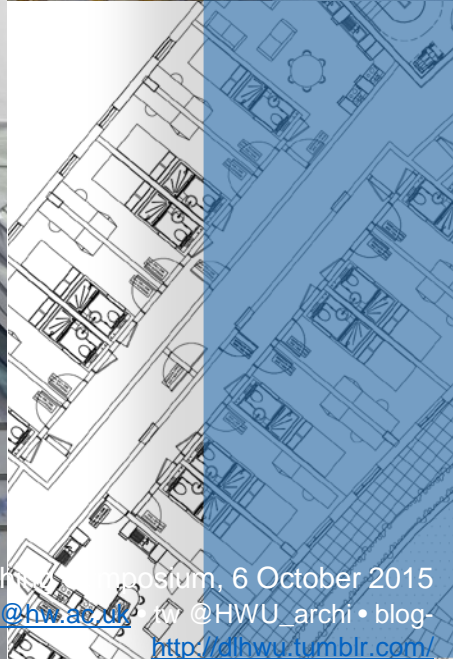
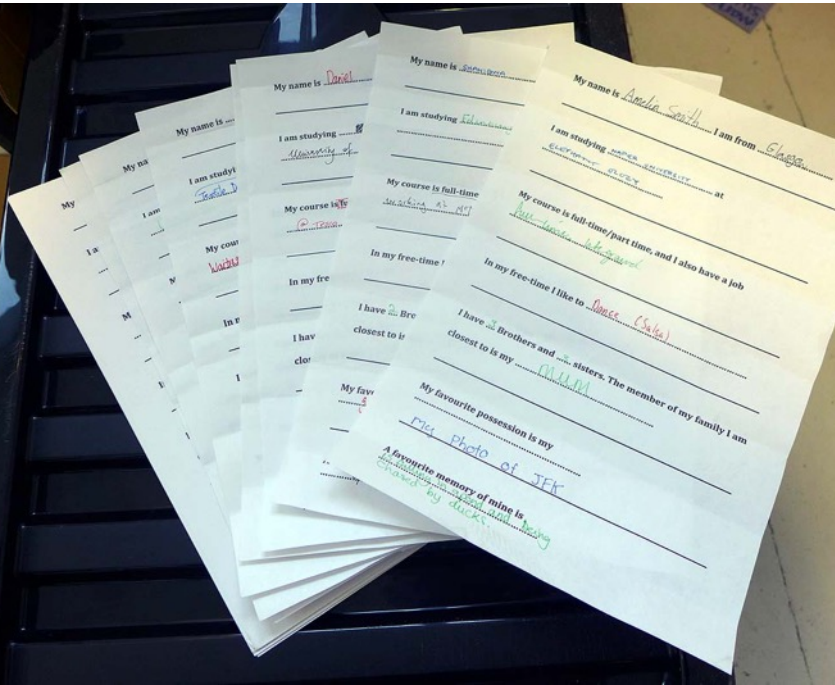
Report on Enhancement Fund Project : Designing Live



Learning and Teaching Symposium, 6 October 2015

Alex MacLaren • e - alex.maclaren@hw.ac.uk • tw @HWU_archi • blog-

<http://dlhwu.tumblr.com/>





Objective 1. Run a permanent site where children can claim their right to play freely, without external pressure, undue adult direction or fear for their own safety.

Baltic Street Adventure Playground defines play as activity which is self directed, self chosen and intrinsically motivated. Children have both a legal right and a biological need to play. In such play, they can be guided by their own curiosity, at their own pace, through a range of challenges, situations, relationships and environments, both real and imaginary. Through this kind of play, child can test and experiment with their relationship to the world and to other people in it.

Baltic Street Adventure Playground exists to serve this need and to enable children to claim this right. In order to do so the organisation needs to maintain the following conditions on site:

1. Absence of external pressure or direction

Behavior occurring as a result of external pressure is not intrinsically motivated and is therefore not play as we define it. Many children are under almost constant pressure to behave in certain ways at school, at home, and in the care of other services. Pressure can also be emotional, and experienced as fear, guilt or uncertainty.

Examples of external pressure include but are not limited to activities undertaken for reward such as an adult devised competitions, pressure to look after a younger sibling, activities which have an agenda imposed by adults, even if such an agenda would in other contexts be considered to be in the children's best interest.

2. Absence of undue adult intervention

While there are times when playworkers need to intervene in children's play, doing so any more than is necessary compromises the children's right to play freely. On a day-to-day basis adults working in the playground make decisions about when to intervene based on the procedures: "Deciding When to Intervene: Risk" and "Deciding When to Intervene: Social and Emotional Well-being".

3. Absence of fear for their own safety.

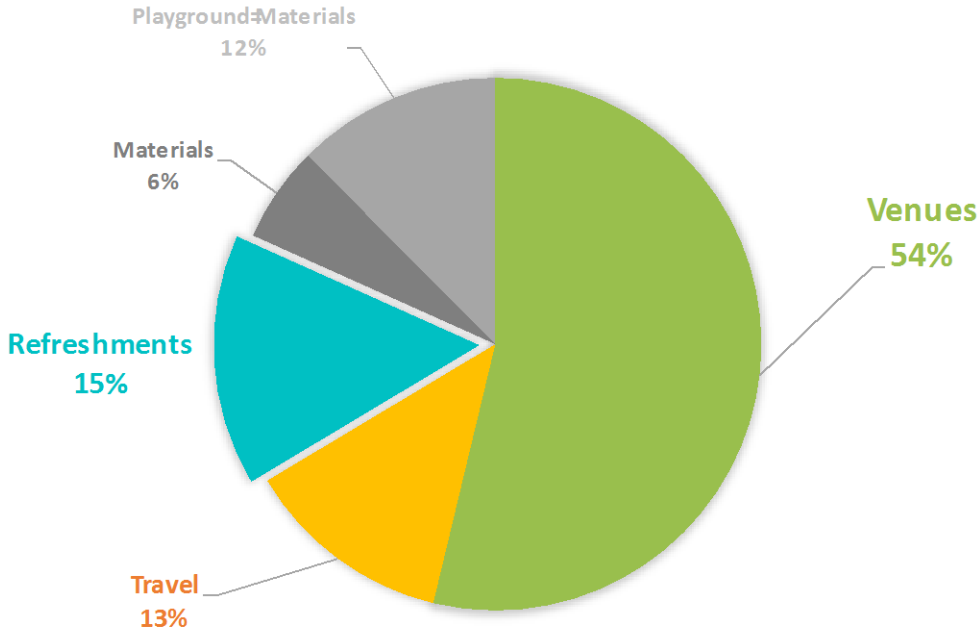
By fear for their own safety, we mean fear which is genuine and sustained, and the cause of which is outside of the children's control. The experience of brief sensations of fear resulting from self-directed behavior is a normal and a very important part of play. This type of fear is distinct from fear rected behavior in response to issues beyond individual children's control, which inhibits play for safety occurring in response to issues beyond individual children's control, which inhibits play. More about our approach to risk and self-direction is contained in "Policy on Risk and Safety" appended to this document.

As we understand it, maintaining these three conditions on a practical level means the organisation needs to support a team of playworkers who:

- know the children, the site and the wider context well.
- are a stable, consistent and reliable presence on site.

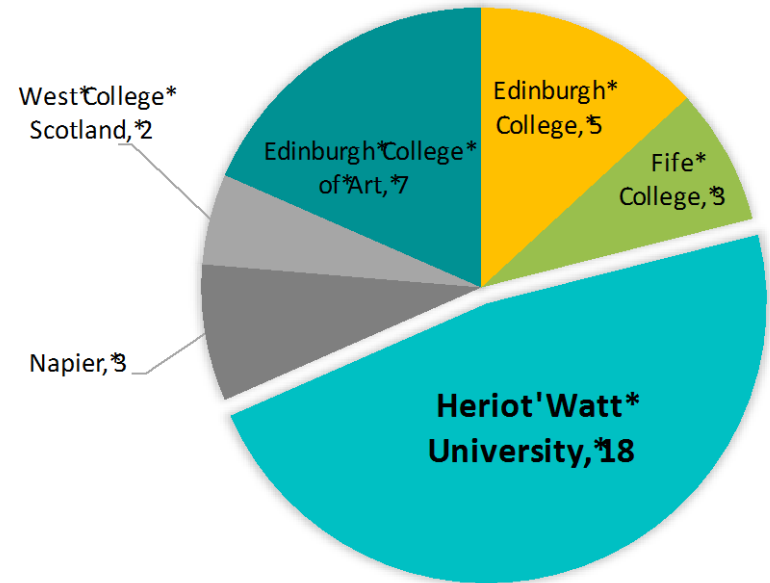


DESIGNING LIVE: EXPENSES



Venues	£1,640.00
Travel	£386.77
Refreshments	£465.62
Materials	£177.72
Playground Materials	£380.67
TOTAL	£3,050.78

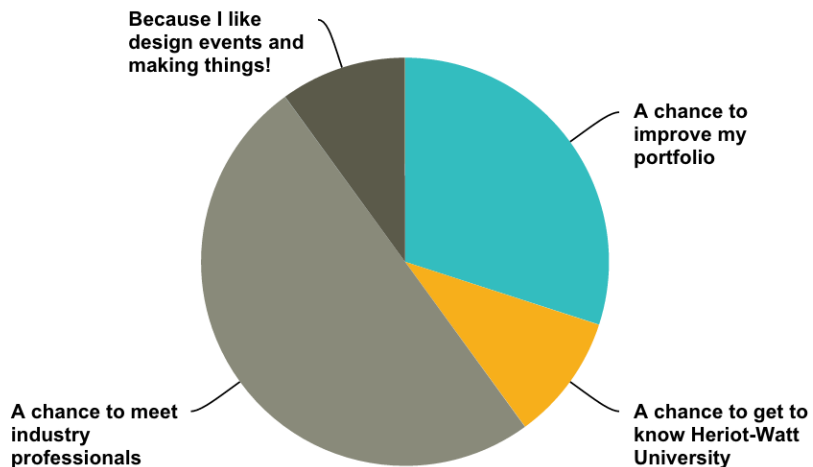
DESIGNING LIVE: ATTENDEES (ALL EVENTS)



3 college students who took part in these events joined Heriot-Watt in September 2015

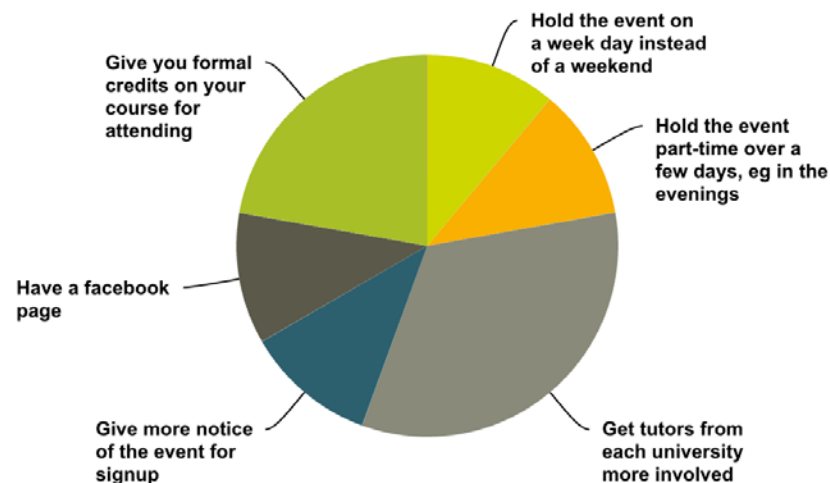
What attracted you most to take part in this event in the first place?

Answered: 10 Skipped: 0



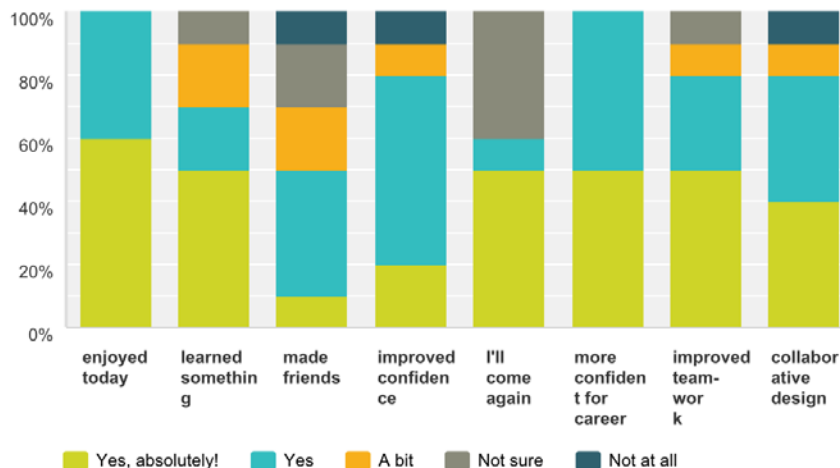
What are the BEST things we could do to make this event easier to participate in for you?

Answered: 9 Skipped: 1



Please tell us how much you agree with these statements

Answered: 10 Skipped: 0







Design LIVE @ Heriot-Watt

The homepage for 'live projects' by the Interior Design and Textiles students of HeriotWatt University, and their collaborators.

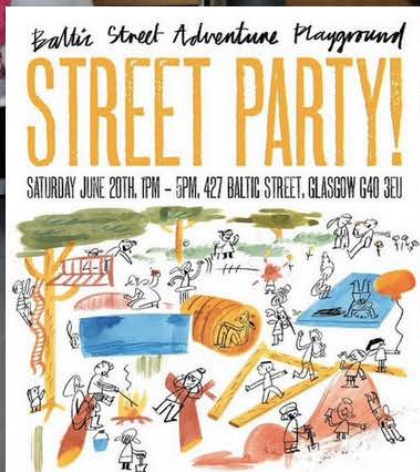


Photo Galleries

Don't forget to click through to our photo galleries:

- "Home" (Feb 2015 event)
- "Make an Entrance" (March 2015 event)
- "Playground Build" (June 2015 event)

#heriotwatt design collaborate wildplay interiordesign student liveprojects

Jul 14, 2015



BRILLIANT week at Baltic Street Adventure play to round up our activities this Semester. Live build project making treehouses, balancing beams, climbing ropes, and even digging beds and planting seeds for veggies! Also some wonderful #reuse : chair handles become 'steps' up the tree trunks, and lovely soft thick anchor ropes from shipping fixed between trees. Happy children! (big kids and little kids!)

ESALA_Dalmarnock @ESALADalmarnock 18 Jun
 What a great team. Playground- #building at @BalticAp with @eca_edinburgh and @HeriotWattUni @CoESBD students...
pic.twitter.com/FTShs0jBxI

BalticStreetAP @BalticAp
 @ESALADalmarnock @eca_edinburgh @HeriotWattUni @CoESBD we are so happy with everything! Thanks so much!!
 8:09 AM - 18 Jun 2015
 1 4

Jul 13, 2015

Looking forward to our collaboration with ESALA (University of Edinburgh) for our final 'Designing Live' event of this academic year: at [Baltic Street Adventure Playground in Glasgow](#). Thanks for the opportunity, Robert and Sarah from BSAP, and Amica from Assemble!

