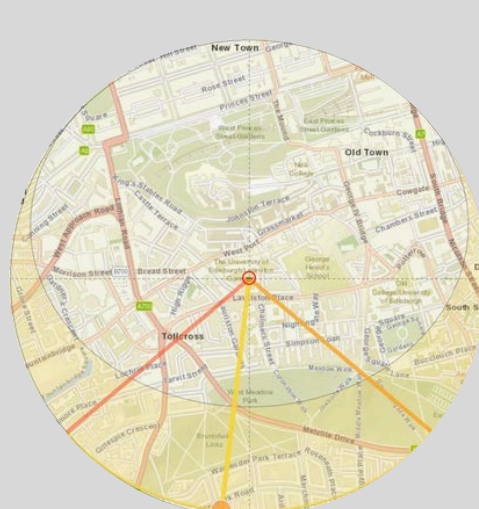
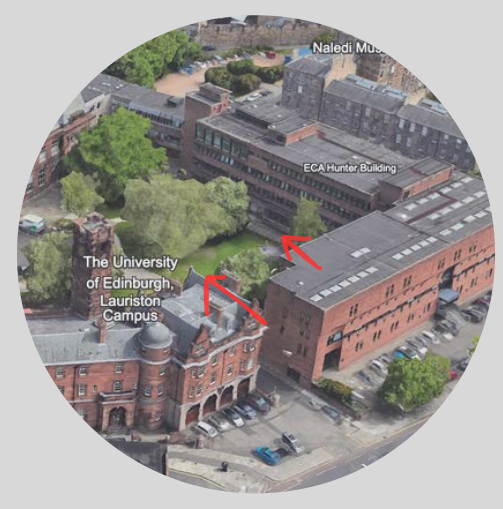
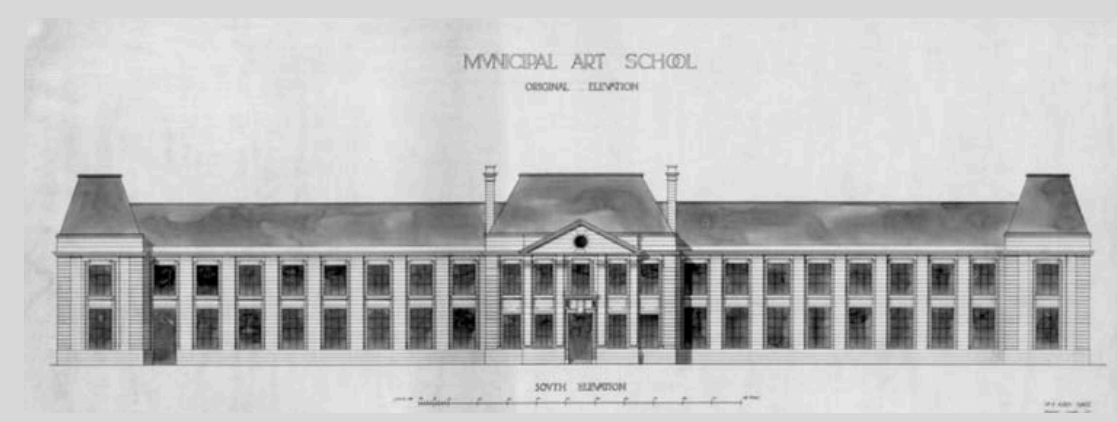


## SITE ANALYSIS

## RATIONALE



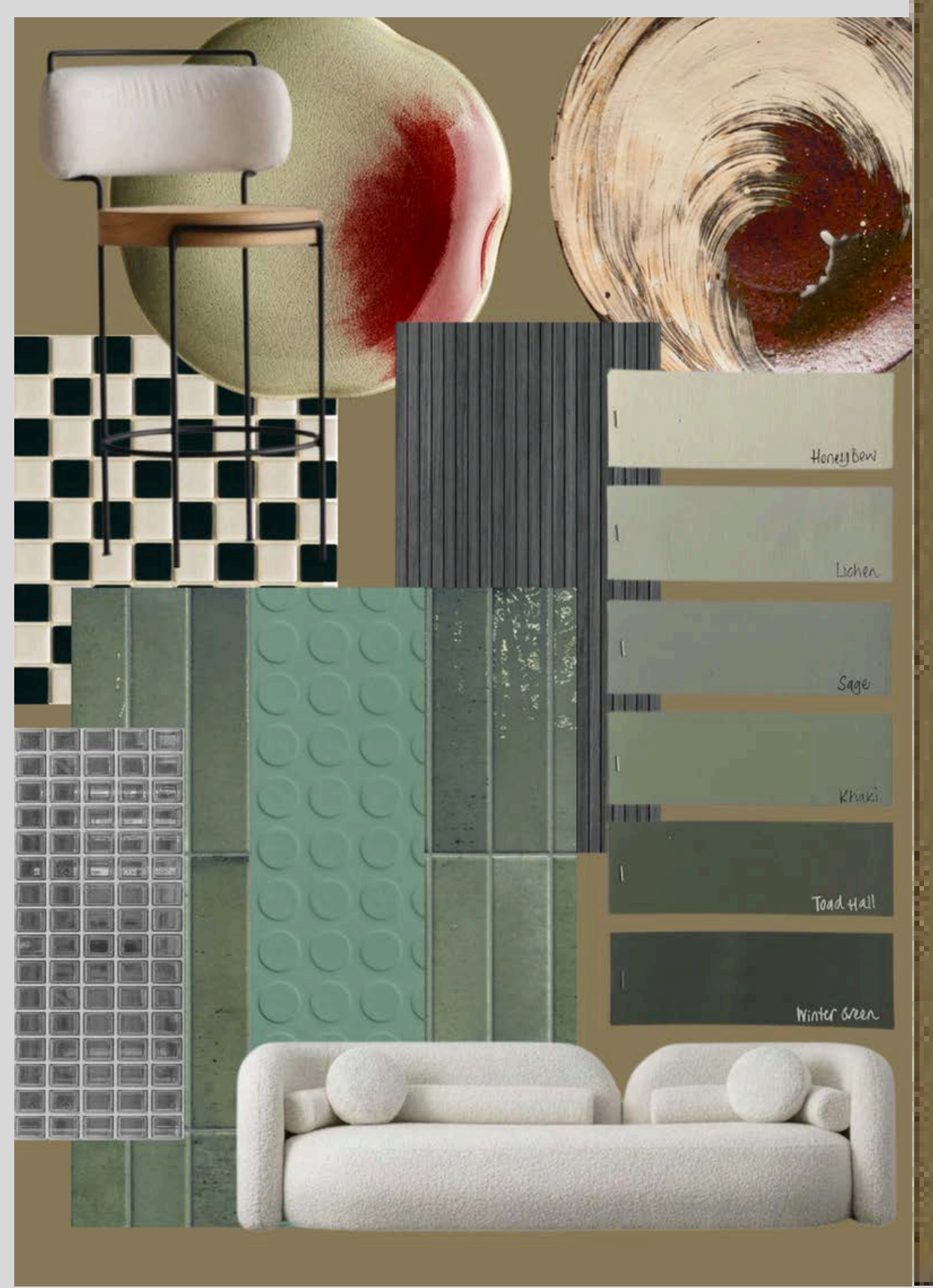
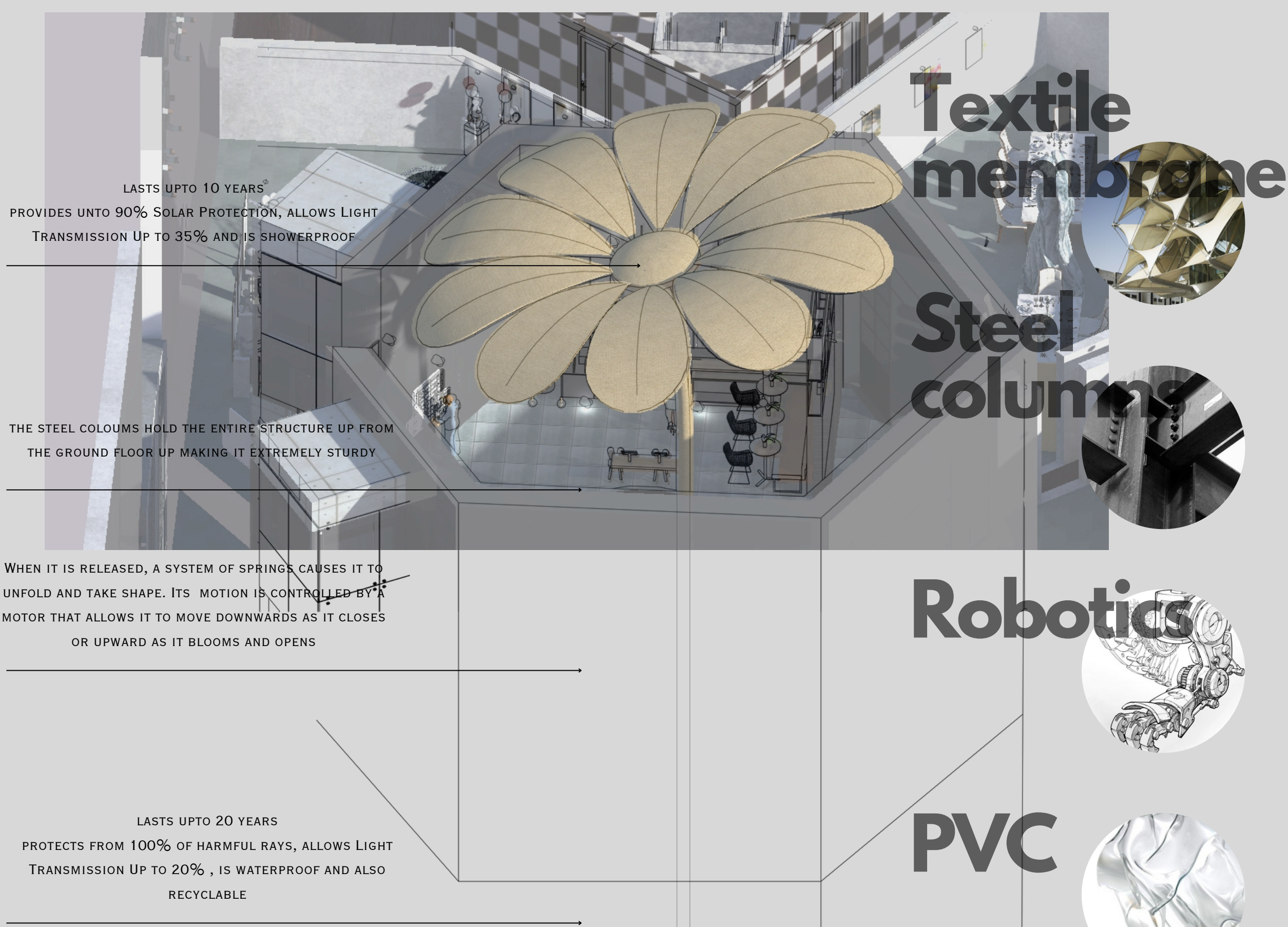
EDINBURGH, LAURISTON PLACE, EDINBURGH COLLEGE OF ART

CREATING AN INCLUSIVE AND ACCESSIBLE EXHIBITION/MUSEUM SPACE FOR INDIVIDUALS WITH PHYSICAL IMPAIRMENTS BY INCORPORATING FEATURES LIKE WHEELCHAIR RAMPS, ELEVATORS, TACTILE EXHIBITS, BRAILLE DESCRIPTIONS, SIGN LANGUAGE INTERPRETATION, AND SENSORY-FRIENDLY ELEMENTS. THE ULTIMATE GOAL WAS TO ENSURE A WELCOMING ENVIRONMENT CATERING TO DIVERSE NEEDS WHILE ALSO PROVIDING AN IMMERSIVE AND ENRICHING EXPERIENCE, BLENDING EDUCATION, ENTERTAINMENT, AND CULTURAL ENRICHMENT.

## SUSTAINABLE DEVELOPMENT GOALS



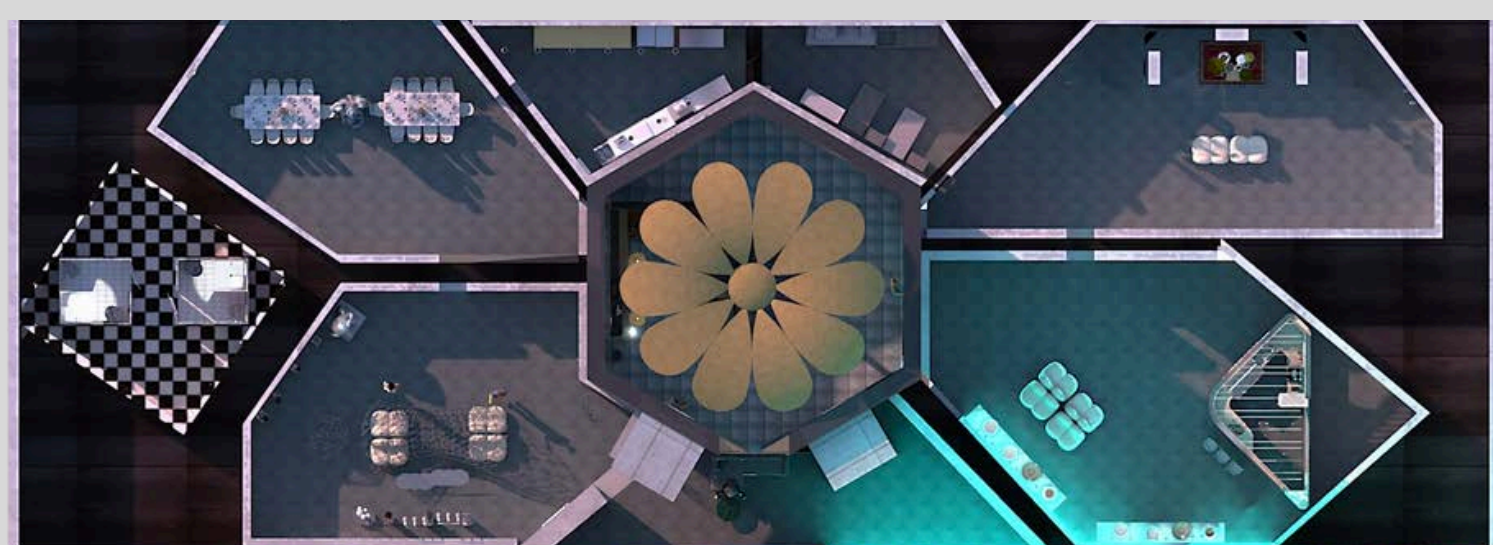
## DESIGN DETAIL



## MATERIAL BOARD

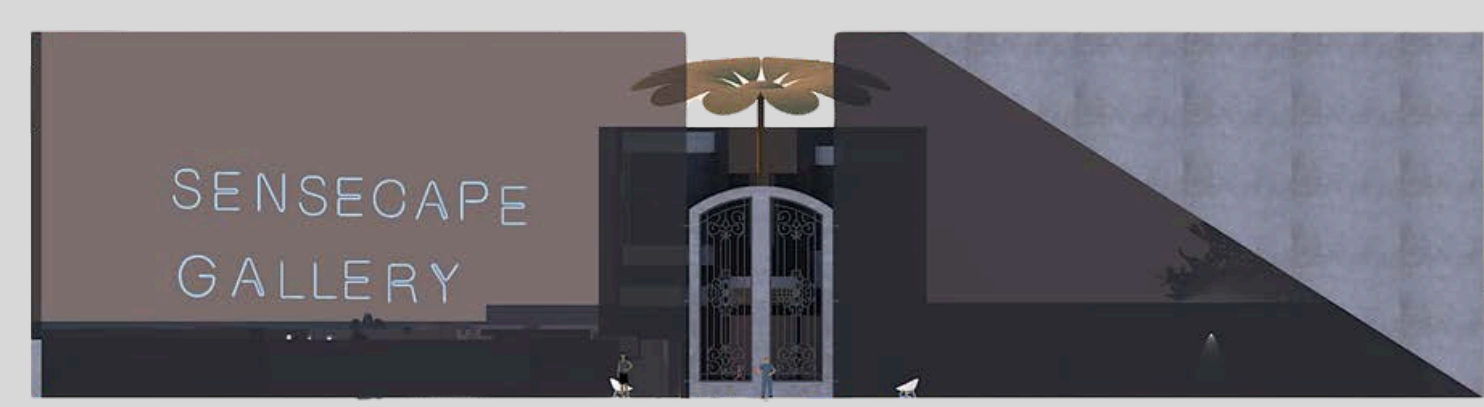
## DESIGN

A FUSION OF CONTEMPORARY AND FUTURISTIC DESIGN USING HUES OF GREY, IVORY AND GREEN TO CREATE A MORE MINIMAL LOOK.



FLOORPLAN

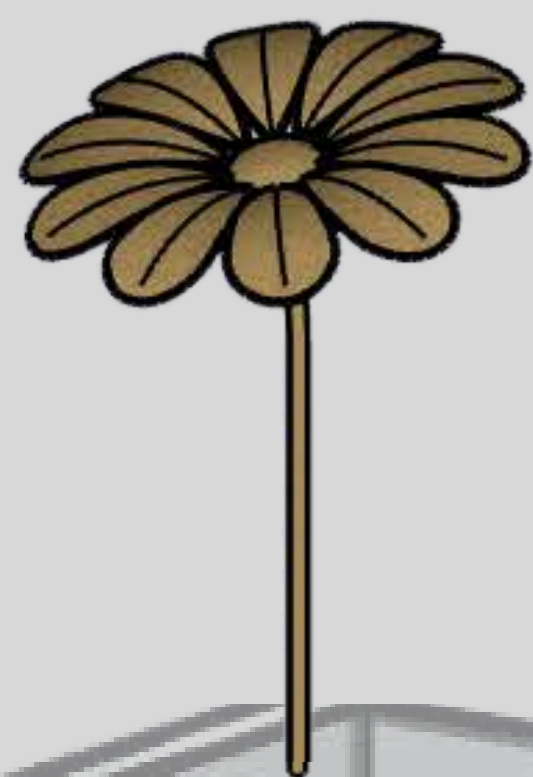
## EXPANDED ISOMETRIC



FRONT ELEVATION



LEFT ELEVATION



RETRACTABLE INSTALLATION THAT ERECTS FROM THE GROUND FLOOR AND ENVELOPS THE FIRST FLOOR



RIGHT ELEVATION

## VISION

THE SENSORY SPIRE CAFE ON THE FIRST FLOOR IS CREATED WITH THE INTENTION OF CONVERGING THE ENTIRE SPACE INTO AN ACCESSIBLE AND ENRICHING BRASSERIE.



SENSORY SPIRE CAFE ON THE FIRST FLOOR

TOUCH ROOM ON THE GROUND FLOOR

GROUND FLOOR CONSISTING OF THE 5 SENSORY ROOMS

## VISION

THE FIVE SENSE ROOMS ON THE GROUND FLOOR AIM TO STIMULATE YOUR SENSES WHILE ALSO SHOWCASING FINE ART FROM ALL OVER THE UK.