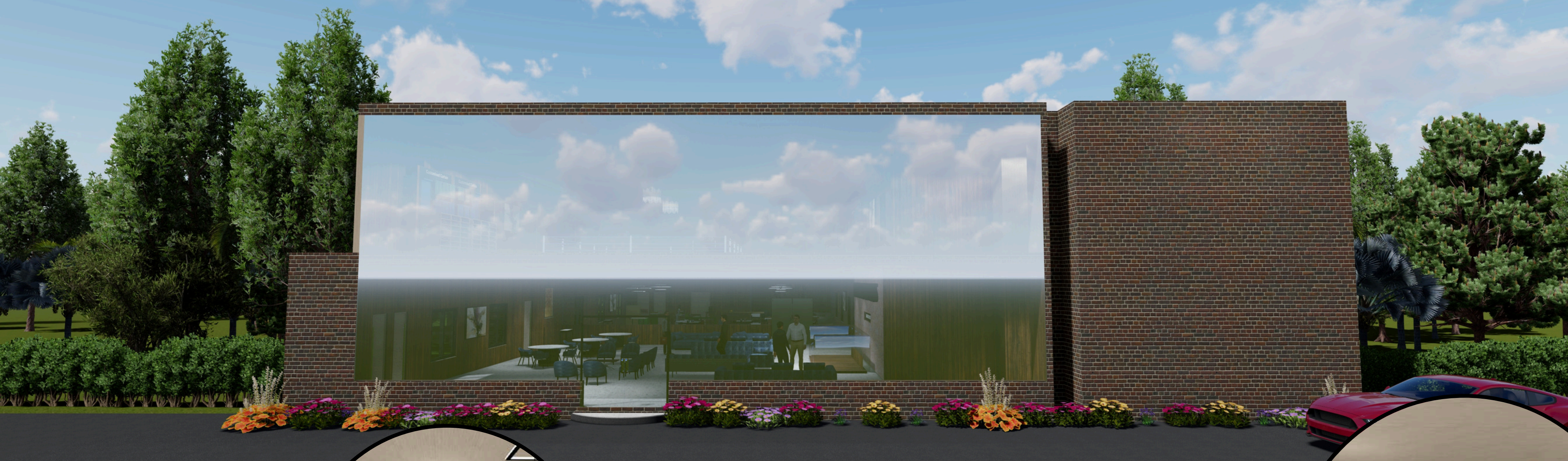


Elevate Studio

Discover the Art of Home



MODEL CONCEPTS



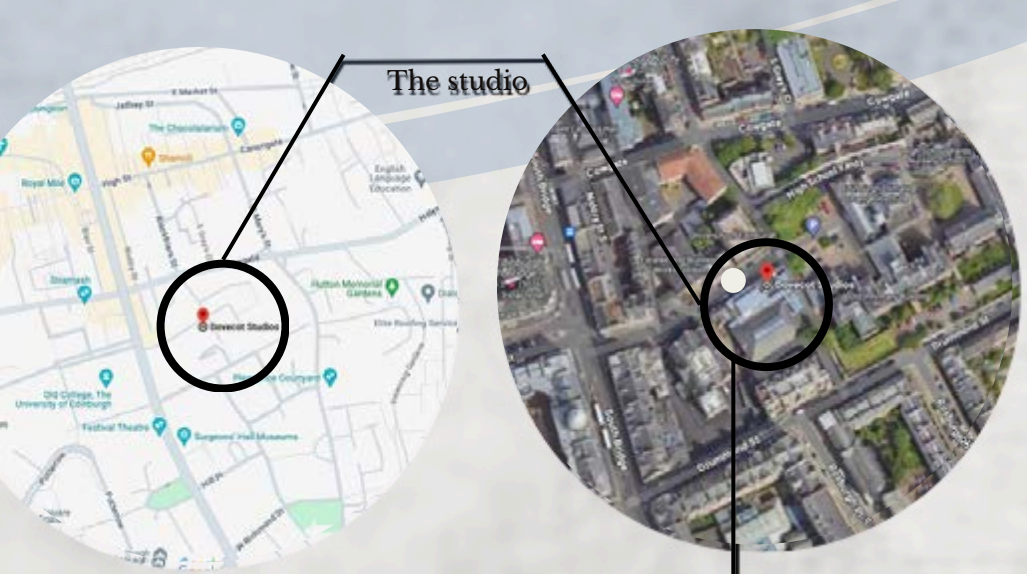
INTRODUCTION

Elevate, a cutting-edge venture converging fashion and interior design, finds a perfect home at Dovecot Studios in the heart of Edinburgh. This dynamic fusion of creativity and sustainability takes shape within the historic walls, redefining interior spaces with upcycled furniture crafted from donated clothing. Dovecot Studios, renowned for its rich tapestry of artistic heritage, complements Elevate's mission seamlessly. The vibrant surroundings, including iconic landmarks like the Royal Mile, provide an ideal backdrop for Elevate's fashion-forward and sustainable offerings. Positioned within this cultural hub, Elevate at Dovecot Studios becomes a destination where the interplay of fashion trends and interior design unfolds, offering patrons an immersive experience that resonates with artistry, community engagement, and the discovery of the art of home.

MATERIAL BOARD

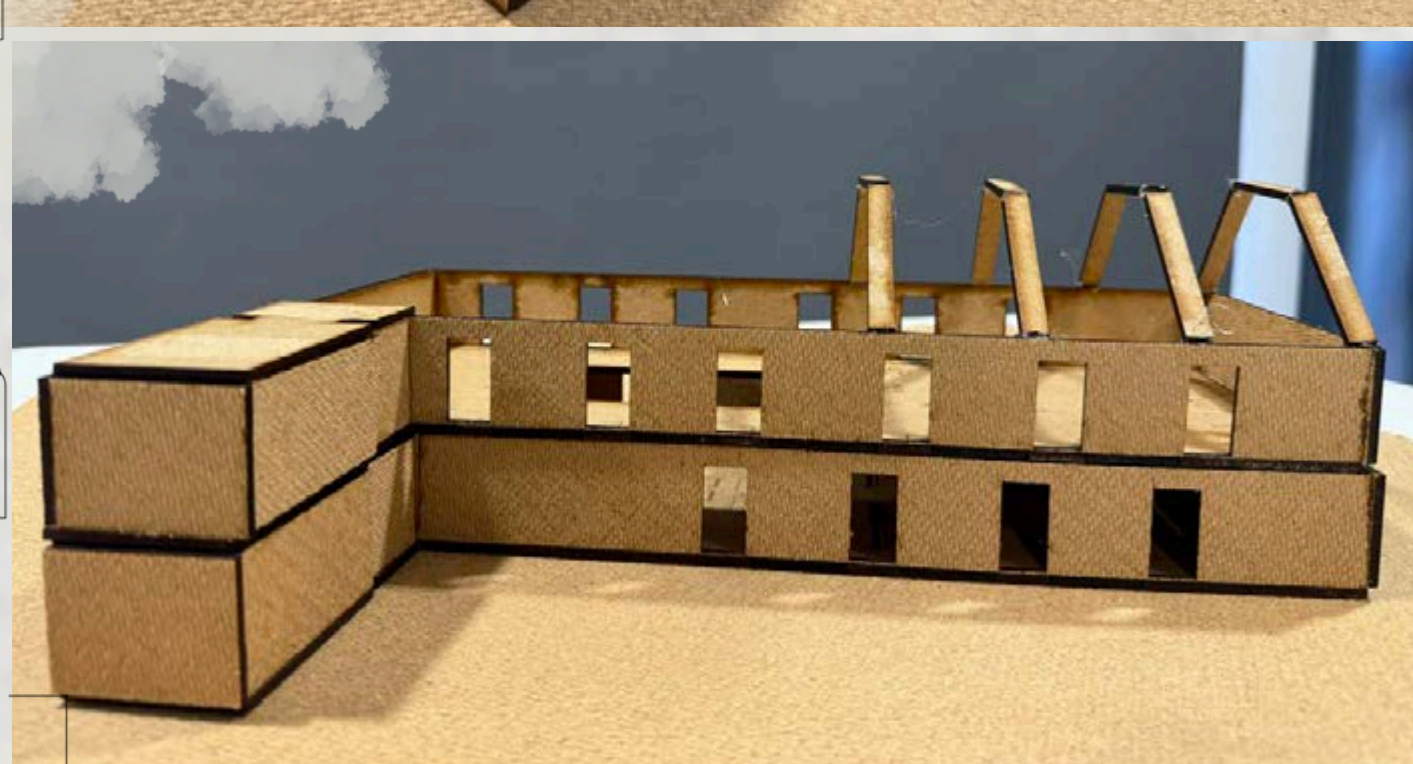


SITE MODEL

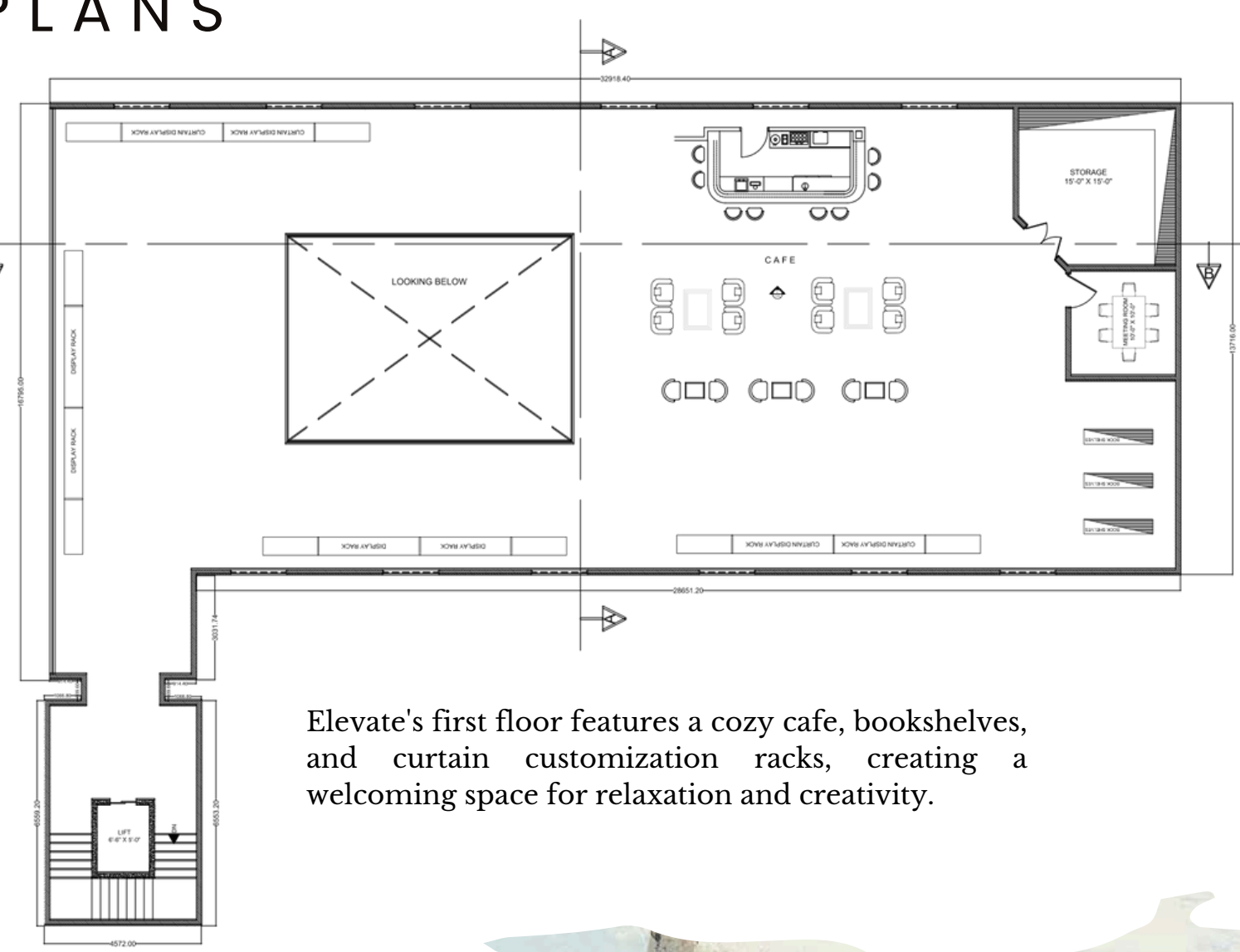
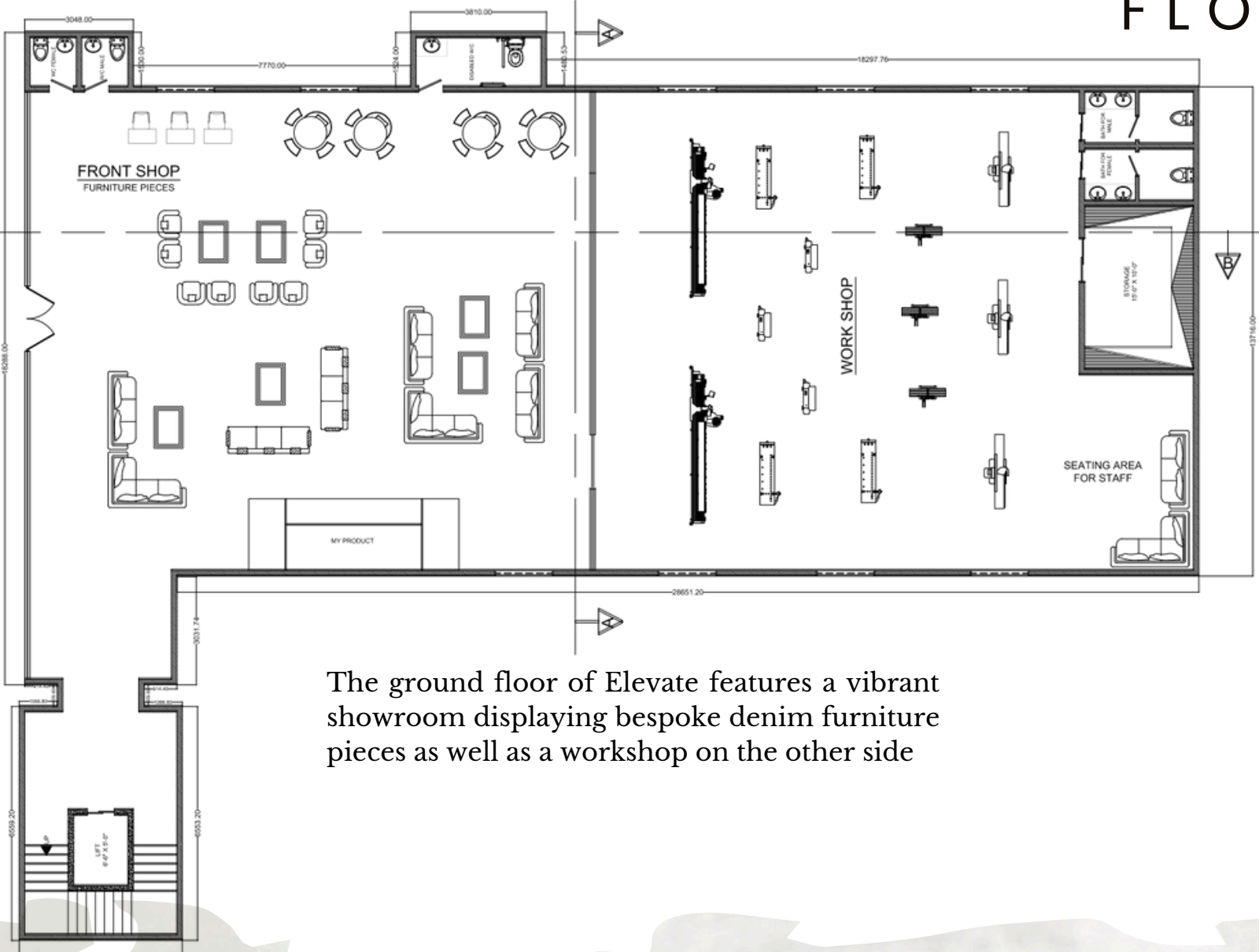


THE SITE
Dovecot Studios is situated at 10 Infirmary Street, Edinburgh EH1 1LT. Located in the heart of Edinburgh's Old Town.

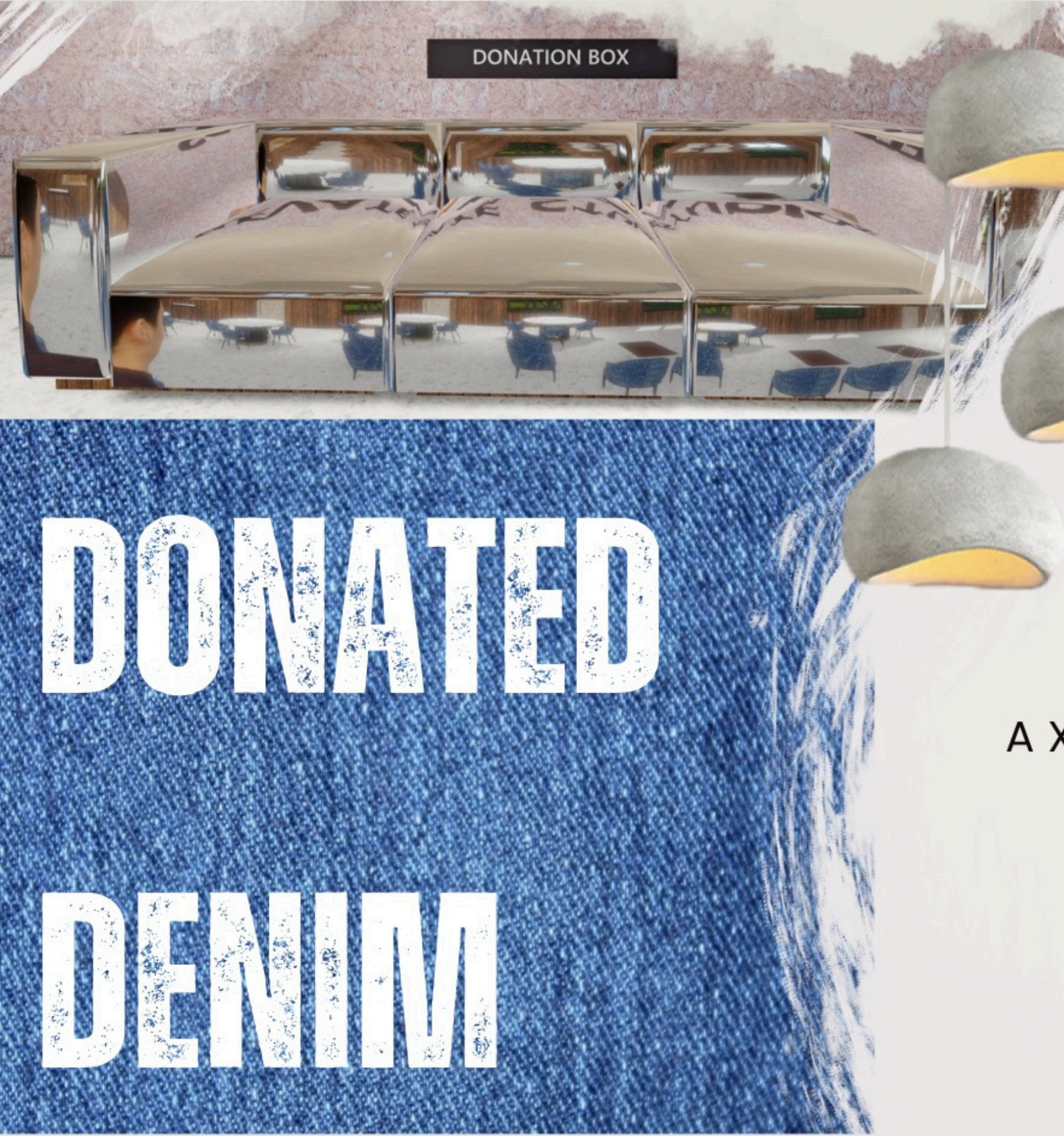
THE PRODUCT



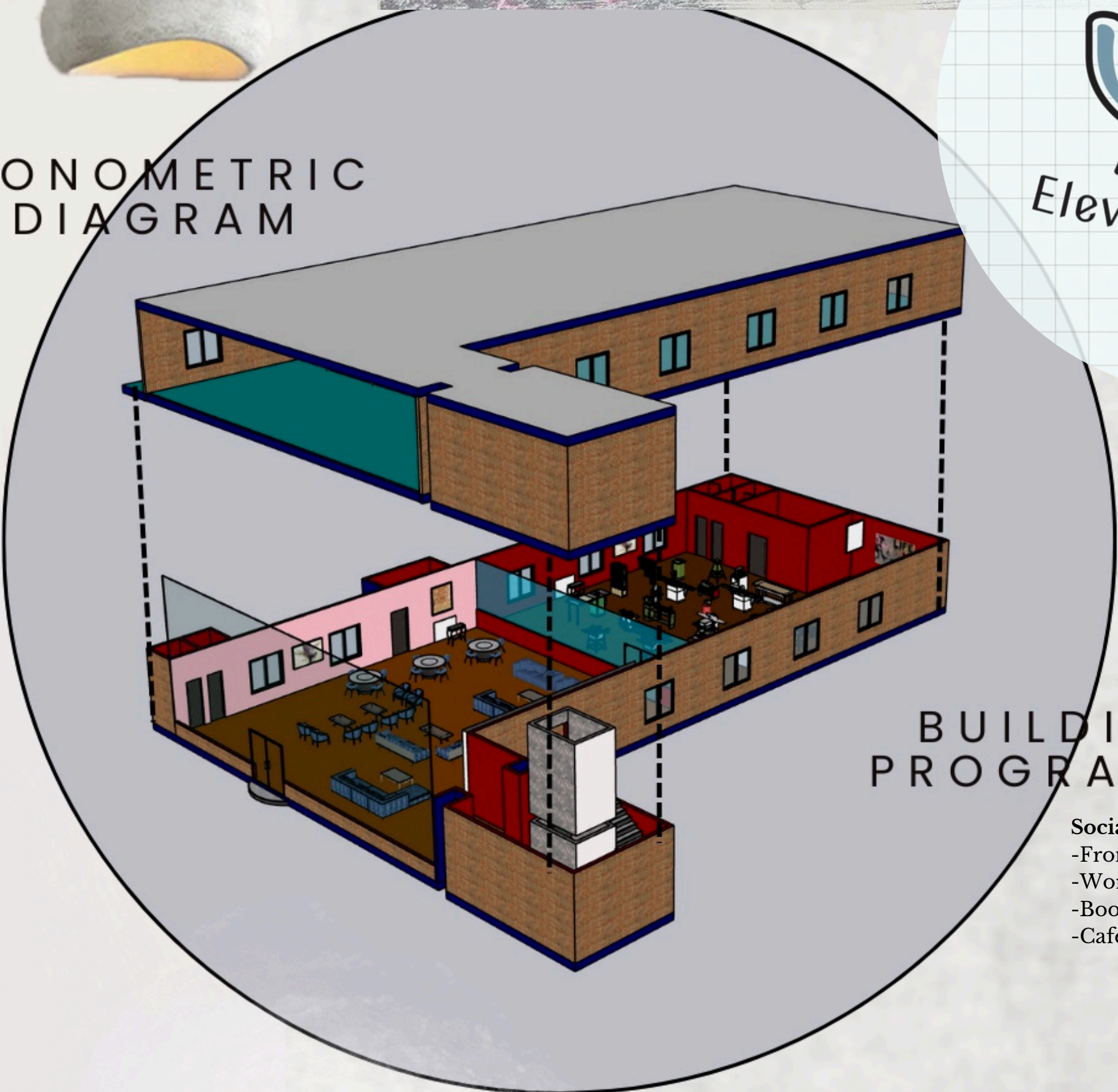
FLOOR PLANS



COLOR SCHEME



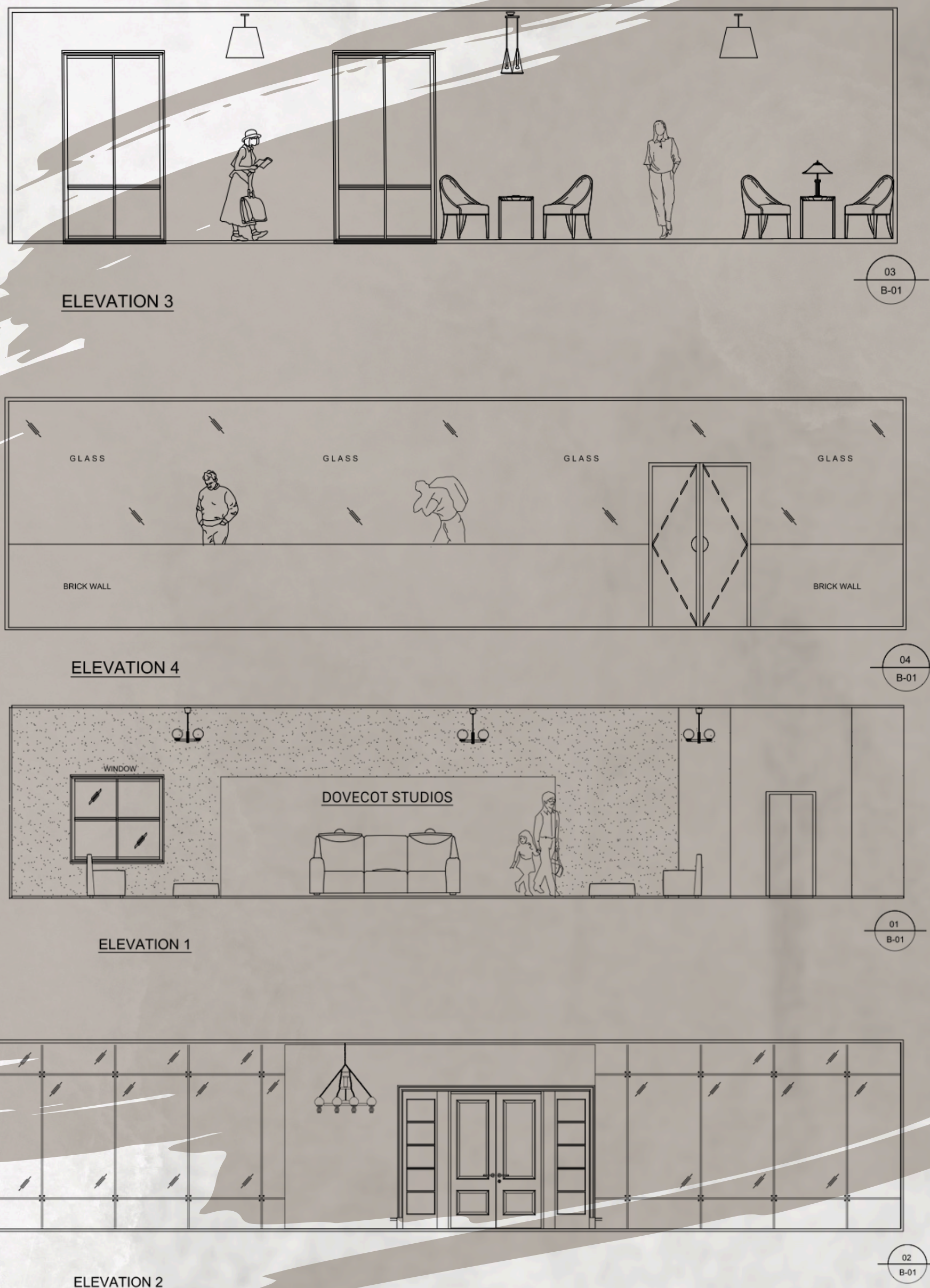
AXONOMETRIC DIAGRAM



BUILDING PROGRAMME

- Social Areas
- Working Areas
- Front shop
- Meeting rooms
- Workshop
- Storage rooms
- Bookshelves
- Curtain racks
- Cafe

MAJOR SPACE ELEVATIONS



Prepared by Lujayn Nasir
H00361238
E101H - FMP Posters

