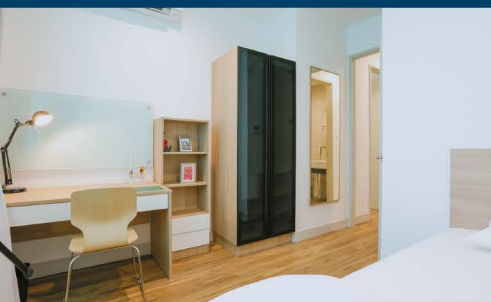


**HERIOT  
WATT**  
UNIVERSITY  
UK | DUBAI | MALAYSIA

# Student Accommodation



Located in close proximity to our vibrant campus, we understand the importance of a comfortable and convenient living environment for students. To support the academic journey and overall wellbeing of our students, these accommodations provide a secure and supportive living space, allowing students to immerse themselves in the academic and social aspects of university life.

## Ready to secure your spot in our vibrant community?

Complete the steps below to express your preferences and ensure you get the accommodation that best suits your needs.

### Step

# 1

When you've decided on your top five choices for student accommodation, hand in the completed application form. Thereafter, please pay the deposit amount of your chosen accommodation as a booking confirmation payment within seven (7) days of receiving the application acceptance confirmation.

**\* Antara Residence, Kanvas SOHO & Shaftsbury RYO**

Submit the application form via email to **MYaccommodation@hw.ac.uk**

**\* Solstice Residence & The Arc**

Submit the application form via email to **brachtiamaju@yahoo.com**

### Step

# 2

The tenancy agreement is established as a 12-month contract applicable to all student tenants. This arrangement ensures a consistent and predictable duration for the lease, providing clarity and stability for students throughout the rental period.

### Step

# 3

After checking in, please pay the rental payment after receiving an invoice. Please note:

\* For Antara Residence & Kanvas SOHO, the University will collect the rental on a quarterly basis (every 3 months), and payment must be made one (1) month in advance.

\* For Shaftsbury RYO, Solstice Residence & The Arc, rental is collected by the accommodation provider on a monthly basis.

### Step

# 4

**Application Contact Details:**

**Antara / Kanvas SOHO / Shaftsbury RYO - Student Accommodation Office:**

Office: +603 889 43866 / 43803 / 43833

Mobile: +6012 320 7599 / +6017 362 5250 / +6012 357 5699

**Antara Residence Support Team Hotline -**

Mobile: +6013 362 8303

**The Arc & Solstice Residence:**

Office: +6012 330 6815

Mobile: +6012 950 5670 / +6012 226 6815

**Application Submission Period:**

All applications must be submitted 2 months prior to intake date.

**Antara Residence** is a newly-built private residence, offering **on-campus student accommodation** just 1km away from Heriot-Watt University Malaysia, within walking distance, and directly managed by the university. This modern-designed 3 bedroom condominium boasts a variety of recreational features, including an infinity swimming pool, an indoor gym, a yoga studio and deck, a seating lounge, a herb garden, a reading room, and more.

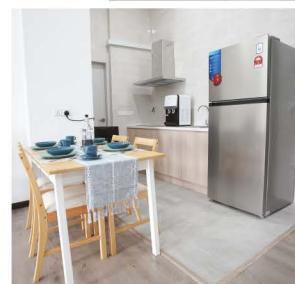


### General Facilities:

- 24-hour Security
- Multi-tier Control Security Access
- Shuttle Bus to Campus
- Public Transportation to Campus & Putrajaya Sentral
- BBQ Area
- Infinity Swimming Pool
- Indoor Gym
- Yoga Studio and Deck
- Twice Weekly Assisted Cleaning of Communal Areas

### Room Features:

- Wi-Fi
- Single-sized Bed with Mattress Protector
- Wardrobe
- Study Table and Chair
- Air-conditioning and Ceiling Fans
- Water Heater
- Dining Table and Chair
- Water Dispenser, Refrigerator and Microwave
- Sofa and Television
- Fire Safety Equipment



# ANTARA RESIDENCE

## PUTRAJAYA

Jalan P5/8, Precinct 5, 62200 Putrajaya, Wilayah Persekutuan Putrajaya



UNIT & ROOM TYPE	RENTAL IN ADVANCE 1 month	DEPOSITS REFUNDABLE AT END OF TENURE			ADMIN CHARGES	TOTAL PAYABLE
		UTILITIES DEPOSIT 1 month	SECURITY DEPOSIT 1 month	ACCESS CARD CHARGES		
<b>Antara Residence, Putrajaya</b>						
Single Non-En Suite (Small Room)	700.00	700.00	700.00	100.00	250.00	2,450.00
Single Non-En Suite (Large Room)	1,250.00	1,250.00	1,250.00			4,100.00
Twin Sharing En Suite	990.00	990.00	990.00			3,320.00

\* All figures shown above are in Malaysian Ringgit.

**Kanvas SOHO** is directly managed by Heriot-Watt University Malaysia. It is an affordable 1-bedroom studio that has become a preferred choice among students. Surrounded by amenities including a grocery store, laundrette service, bus stand, food outlets and many more which are just a 5 to 10-minute walk away, the studio apartments are available in 3 options, i.e. Single Studio, Twin Sharing Studio and Triple Sharing Studio. All options have an attached bathroom and basic furniture for students.



### General Facilities:

- 24-Hour Security
- Multi-Tier Control Security Access
- Shuttle Bus to Campus
- CCTV Surveillance
- Swimming Pool and Jacuzzi
- Restaurants and Cafes
- Gym
- BBQ Pit
- Sky Deck/Sky Lounge
- Restaurants and Cafes
- Laundrette

### Room Features:

- Single-Sized Bed / Queen-Sized Bed
- Wardrobe
- Study Table and Chair
- Air-conditioning and Ceiling Fans
- Refrigerator
- Mattress Protector
- Wi-Fi
- Fire Safety Equipment
- Induction Cooker and Electric Hood
- Kitchen



# KANVAS SOHO

CYBERJAYA **Jalan Teknokrat 6, 63000 Cyberjaya, Selangor Darul Ehsan**



UNIT & ROOM TYPE	RENTAL IN ADVANCE <i>1 month</i>	DEPOSITS REFUNDABLE AT END OF TENURE				ADMIN CHARGES	TOTAL PAYABLE
		UTILITIES DEPOSIT <i>1 month</i>	SECURITY DEPOSIT <i>1 month</i>	ACCESS CARD DEPOSIT			
<b>Kanvas Soho, Cyberjaya</b>							
1-bedroom Studio Apartment							
Single (En Suite)	1,600.00	1,600.00	1,600.00	100.00	250.00	<b>5,150.00</b>	
Twin Sharing (En Suite)	850.00	850.00	850.00			<b>2,900.00</b>	
Triple Sharing (En Suite)	600.00	600.00	600.00			<b>2,150.00</b>	

\* All figures shown above are in Malaysian Ringgit.



# SHAFTSBURY RYO

PUTRAJAYA **Jalan Alamanda, Precinct 1, 62000 Putrajaya, Wilayah Persekutuan Putrajaya**

**Shaftsbury RYO Putrajaya**, a third-party accommodation building provided by Ikhasas Group, is conveniently connected to Shaftsbury Putrajaya Retail Mall with food and beverage outlets situated just at the lobby level. It is attached to an exquisite 4-star hotel with quality service and guaranteed security. Additionally, the link bridge to Alamanda Putrajaya means that Shaftsbury RYO Putrajaya is only 5 minutes away from a variety of amenities.



## General Facilities:

- Cashless Laundrette
- Shuttle Bus to Campus
- Saltwater Pool
- 24-Hour Security
- Wi-Fi
- Bi-Weekly Assisted Cleaning
- Gym and Parking Pass (Monthly Charges Applies)

## Room Features:

- Super Single Bed
- Mattress Protector
- Desk and Desk Chair
- Desk Lamp
- Wardrobe
- Bookshelf
- Writing Board
- Ethernet Port
- Power Socket with USB Charging Port
- Shared Bathroom For Single and Twin Sharing Rooms



UNIT & ROOM TYPE	RENTAL IN ADVANCE 1 month (with 8% SST)	DEPOSITS REFUNDABLE AT END OF TENURE			ADMIN CHARGES (with 8% SST)	TOTAL PAYABLE (inclusive 8% SST)
		UTILITIES DEPOSIT 1 month	SECURITY DEPOSIT 1 month	ACCESS CARD DEPOSIT		
<b>Shaftsbury Ryo, Putrajaya</b>						
Single Shared Bathroom	1,437.48	1,331.00	1,331.00	100.00	270.00	4,469.48
Twin Sharing Shared Bathroom	1,176.12	1,089.00	1,089.00			3,724.12
Twin Sharing (En Suite)	1,306.80	1,210.00	1,210.00			4,096.80
Large Twin Sharing (En Suite)	1,372.14	1,270.50	1,270.50			4,283.14
Starter Kit (Polyester Pillow, Bedsheet, Pillowcase, Comforter)	-	-	-			486.00

\* All figures shown above are in Malaysian Ringgit.

\*\* Additional Tourism Tax of RM300.00 per room per person (foreign passport holder). The price shown is inclusive of 8% SST starting March 2024.

**The Solstice Residence** is a third-party accommodation provided by Brachtia Maju Sdn Bhd. It is a modern-designed condominium which boasts a variety of recreational features including a swimming pool, poolside sunbeds, floating cabanas, a techno-gymnasium, café and convenience store, a rooftop garden and more. Amenities such as banks and a clinic can also be found around the vicinity. The 1-room units come fully-furnished, including a washing machine, refrigerator, and microwave.



**General Facilities:**

- 24-hour Security
- Shuttle Bus to Campus
- Swimming Pool
- Techno-gymnasium
- Café
- Convenience Store

**Room Features:**

- Queen-sized Bed
- Air-conditioning
- Refrigerator
- Washing Machine
- Microwave
- Sofa
- Wardrobe
- Living Area
- Wi-Fi



# SOLSTICE RESIDENCE

CYBERJAYA Menara Solstice, Persiaran Bestari, Cyber 11, 63000 Cyberjaya, Selangor Darul Ehsan



UNIT & ROOM TYPE	RENTAL RATE <i>(per month)</i>	RENTAL IN ADVANCE <i>2 months</i>	DEPOSITS REFUNDABLE AT END OF TENURE			ONE TIME FEE		TOTAL PAYABLE
			UTILITIES DEPOSIT <i>1 month</i>	SECURITY DEPOSIT <i>2 months</i>	ACCESS CARD DEPOSIT	ACCESS CARD CHARGES	ADMIN + AGREEMENT CHARGES	
<b>Solstice Residence, Cyberjaya</b>								
Unit Type: 1 Bedroom Apartment with attached bath								
Single	1,400.00	2,800.00	1,400.00	2,800.00	150.00	0.00	350.00	<b>7,500.00</b>

\* All figures shown above are in Malaysian Ringgit.



# THE ARC

## CYBERJAYA

Persiaran Bestari, Cyber 11, 63000 Cyberjaya, Selangor Darul Ehsan

**The Arc** is a third-party accommodation serviced apartment provided by Brachtia Maju Sdn Bhd. It comes with public transportation access via taxis and buses that makes it easy to move from one location to another. It is also accessible via the Putrajaya or Cyberjaya KLIA Transit Station. Several other amenities that surround this development include Street Mall, Cyberjaya Lake Garden, and Cyberjaya Mosque. The apartment is available in 2 options, i.e. Single Unit and Twin-sharing Unit.

### General Facilities:

- 24-hour Security
- Shuttle Bus to Campus
- Swimming Pool
- Squash Court
- Badminton Court
- Gymnasium
- Laundrette
- Convenience Store
- Food Court
- Surau



### Room Features:

- Single-sized Bed
- Refrigerator
- Fully Equipped Kitchen
- Dining Area
- Living Area
- Bed and Mattress
- Air-conditioning



UNIT & ROOM TYPE	RENTAL RATE (per month)	RENTAL IN ADVANCE 2 months	DEPOSITS REFUNDABLE AT END OF TENURE			ONE TIME FEE		TOTAL PAYABLE
			UTILITIES DEPOSIT 1 month	SECURITY DEPOSIT 2 months	ACCESS CARD DEPOSIT	ACCESS CARD CHARGES	ADMIN + AGREEMENT CHARGES	
<b>The Arc, Cyberjaya</b>								
<b>Short Term Contract :</b>								
Single	750.00 - 1100.00	2,250.00 - 3,300.00	0.00	750.00 - 1100.00	50.00	20.00	200.00	3,270.00 - 4,670.00
Twin Sharing	450.00 - 550.00	1,350.00 - 1,650.00		450.00 - 550.00				2,070.00 - 2,470.00
<b>Long Term (12 Months Contract) :</b>								
Single	600.00 - 950.00	1,200.00 - 1,900.00	600.00 - 950.00	1,200.00 - 1,900.00	50.00	20.00	200.00	3,270.00 - 5,020.00
Twin Sharing	325.00 - 500.00	650.00 - 1,000.00	325.00 - 500.00	650.00 - 1,000.00				1,895.00 - 2,770.00

\* All figures shown above are in Malaysian Ringgit.

\*\* All figures shown above are estimate amount, the range of figures are subject to Unit Type and Room Type.



Scan to Navigate  
to Our Location




## Follow Us

-  /hwumalaysia
-  @hwumalaysia
-  /@HeriotWattUniversityMalaysia
-  heriotwattmalaysia

[www.hw.edu.my](http://www.hw.edu.my)

Open for consultation:  
Monday to Friday (9am - 5pm) and Weekends (10am - 4pm) except Public Holidays

Heriot-Watt University Malaysia (DULN007(WP))  
No. 1, Jalan Venna P5/2, Precinct 5, 62200 Putrajaya, Malaysia

 +603-8894 3888  +6012-651 2599  HWUM@hw.ac.uk



As of September 2024